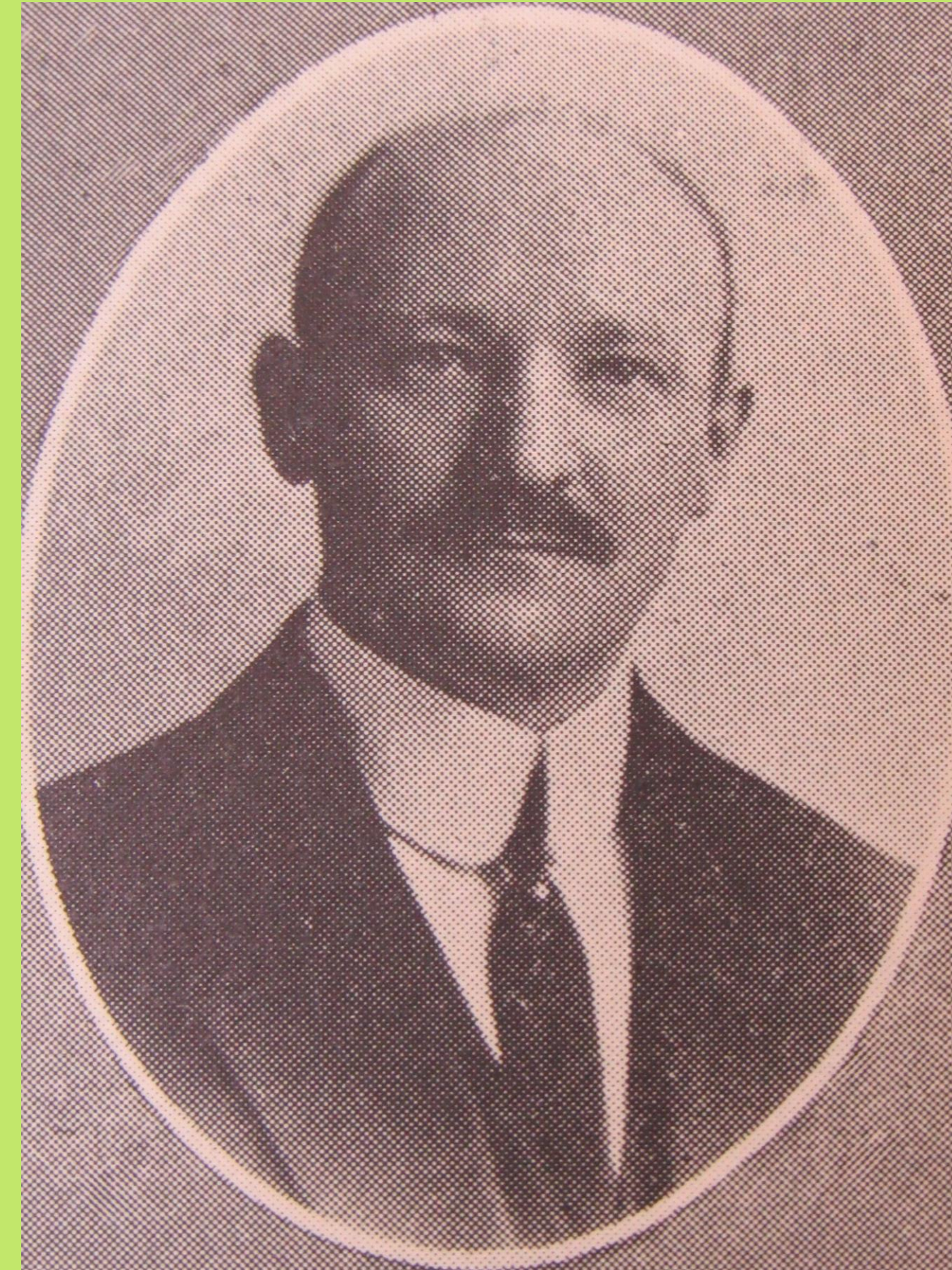


The First Faculty, 1923-1930.

By Prof. Pauline J. Reynolds and Karalee Vaughn

The early faculty of the School of Education (SOE) were instrumental in building the foundations of the school, the development of its programs, and its initial reputation for teacher training in the state. In addition to their classes, the SOE faculty were highly involved in the University of Redlands (U of R), the local community, and various organizations and initiatives.

Although many of the university faculty in 1923 were initially included in official documents as contributing to the education programs, the director's annotated catalogues show that most of the courses were taught by four main faculty in the SOE's early years, all hired to support the nascent teacher training programs. These first faculty shaped and enriched students' learning and their practice in education, the influence of their work within the U of R extending to the lives of countless others – locally, nationally, and even beyond.



Professor Iwar S. Westerberg (1923-43). *La Letra*, 1925, p.111

1. Professor Iwar Sigurd Westerberg (1923-43) was the first education faculty member hired by the U of R in 1923. He came from the University of Washington where he earned his Ph.D. (1923) having previously earned an A.M. from Harvard (1908) and an A.B. from Clark University (1907). Prof. Westerberg was the founding father of the SOE as faculty member and director, serving the U of R in these roles for 20 years. In this early period, he developed the first 3 teacher training programs, sought a novel partnership with the school district for students to practice teaching, leveraged his professional network in support of the U of R, and led accreditation efforts for both the education programs and the university.

1.A According to the university newspaper, Prof. Westerberg was an involved and acclaimed member of the faculty - students report he won "national honors" in 1925 (Sept 22), preached kindness and collegiality at morning chapel (Oct. 3, 1924), and composed a song to welcome new members of Delta Alpha, an academic honors fraternity, wryly noting "the song...has evidently made a place for itself" (April 26, 1926). In addition to his work on numerous university committees, such as the President's cabinet, and his leadership roles (Director of the SOE from 1923/Director for Summer School Sessions from 1929), he was first violin with the U of R orchestra. Beyond the university he represented the U of R as a member or elected leader in external organizations, most notably in these early years with the Southern California Association for Colleges and Universities. He also served the community as President of Redlands Community Orchestra and the Director of the Baptist Sunday School Orchestra (*Alumnus*, Nov. 1925, p. 13). The SOE would not have existed without Westerberg's huge contributions.



Associate Professor John B. Hathorn. *La Letra*, 1927, p.15.

2. Associate Professor John Broadus Hathorn (1925-27) joined Westerberg as an Associate Professor of Education in Fall 1925. According to Westerberg's annotated catalogues, Hathorn taught a wide range of classes his first year including: Principles of Education, History of Education, Child Psychology, Tests and Measurements, among others. He also served on several committees, including the "College Life" and "Scholarship" faculty committees (U of R Catalogue, 1926). Although only with the university for a couple of years, university publications mention Hathorn quite frequently due to an unexpected role he took on during his first year. After the baseball coach's surprising departure, Hathorn assumed coaching responsibilities for the varsity team. Apparently in 1926 he still held a strikeout record for Texas colleges from his own playing days as a former star collegiate player (*La Letra*, 1926, p. 140). The student newspaper routinely reported Hathorn's hard work during the Spring of 1926 with the varsity players, surmising that "The team has steadily improved under the careful tutoring of Coach Hathorn" (May 14, 1926). As a sign of the recognition he received from the student body, Hathorn was lampooned in the spoof edition of the paper that Spring as a cigar smoking baby (April 28, 1926).



Caricature of Hathorn. *U of R Campus*, April 28, 1926.

4. Associate Professor Louis J. Neidert (1927-35) joined the U of R's SOE after Hathorn left to return to Texas in the summer of 1927. The *Alumnus* (Nov. 1927) notes that Neidert joined the faculty having "completed practically all work for Ph. D. degree at the University of Washington (UW) of which he is an alumnus."



Associate Professor Louis J. Neidert. *La Letra*, 1928, p.18.

3. Associate Professor Elizabeth Hidden (1926-54) returned to her alma mater in 1926 as the first woman faculty member for the SOE. After graduating with her Ph. B from U of R in 1912, Hidden continued her education with a Master's of Arts degree from the Teacher's College of Columbia University where she also earned the Deans of Women certificate. Current faculty member Dr. Adriana Ruiz Alvarado notes that as Deans of Women certificates were the precursor to Higher Education Student Affairs (HESA) programs, Hidden might be considered our first HESA faculty member, foreshadowing the SOE's current program



Associate Professor Elizabeth Hidden. *La Letra*, 1927, p. 15

3A. Based on catalogue course allocation (1927 - 1930) and the description of her role in the *Alumnus* (July, 1926), Associate Professor Hidden's main responsibility was to supervise practice teaching for all three initial teacher training programs – elementary, junior high, and high school, a role described as a "Critic Teacher" (*Alumnus*, July, 1926). She also taught "Penmanship" and "Phonics," non-credit courses included from the 1927 catalogue that were required for those wishing to be credentialed in elementary education as "knowledge of these subjects will prove very valuable in securing a position" (p.73). It is notable that Hidden's contributions to the SOE in this early period were all practice-based rather than academic in nature, which may reflect how gender operated in university teacher training at this time. In addition to her time supporting the education programs, during these first years at the U. of R. she served on committees and advised various student activities, such as the "Christian Life" faculty committee (U. of R. Catalogue 1927), faculty adviser for YWCA (*La Letra*, 1929), and *Sorores in Facultate* of Alpha Theta Pi (*La Letra*, '28).

4.A. As Westerberg was an alumnus of UW himself and still in contact with the Dean of Education there, it may be that after finding himself in desperate need for a colleague late in summer he reached out for a recommendation from his alma mater, leading to Associate Professor Neidert's hire. Neidert took over many of the classes taught by Hathorn the previous year, also serving on the "Credentials" faculty committee (U. of R. Catalogue, 1928 & 1929) as well as *Fratres in Facultate* for Delta Alpha (1929, 1930, etc.). Neidert earned his Ph.D. from the University of Washington at the end of his first year at the U. of R., in Summer 1928.

Neidert was well-loved by students and alumni having invested time supporting their "personal problems," made "tireless efforts" for the Redlands-in-Burma project, and left behind him a "host of friends among the alumni and students" (*Alumnus*, April -June, 1935, p.4).

To share your stories with the School of Education Centennial History Project contact us at: SOEHistory@redlands.edu